



京天成生物技术（北京）有限公司

AbMax Biotechnology Co., LTD

北京海淀区上地东路 29 号 2B 702

Building-2B, Suite 702, 29 E ShangDi Road,  
Beijing, 100085, China

Tel: 86-10-82896224, Fax: 86-10-62977292

E-mail: info@antibodychina.com

www.antibodychina.com

## Anti-acetyl-Lysine, Clone 5A1

(mouse monoclonal IgG)

Catalog # 05-0076

Lot # 100259

**Immunogen:** Synthetic peptide containing lysine acetylated.

**Specificity:** The antibody only detects lysine-acetylated proteins from all species.

**Formulation:** 0.1mg of mouse monoclonal IgG in 0.1ml of 0.01M Tris-HCl, pH 8.0, 0.15M NaCl, 25% glycerol, 0.02% sodium azide. Protein was determined by OD<sub>280</sub> absorbance.

**Physical State:** Frozen liquid.

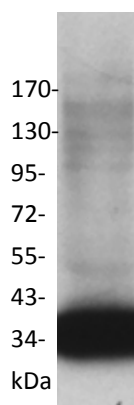
**Storage:** Store at -20°C. Product is stable for about 6 weeks at 2-8 C as an undiluted liquid. Prepare working dilution fresh each day. Avoid repeated freezing and thawing.

**Note:** For maximum recovery of product, centrifuge the original vial prior to removing the cap.

**Background:** Acetylation of lysine residues within proteins has emerged as an important mechanism used by cells to overcome this repression. The acetylation of non-histone proteins such as transcription factors, as well as histones appears to be involved in this process. Acetylation may result in structural transitions as well as specific signaling within discrete chromatin domains. The role of acetylation in intracellular signaling has been inferred from the binding of acetylated peptides by the conserved bromodomain.

**FOR IN VITRO RESEARCH USE ONLY  
NOT FOR USE IN HUMANS**

### Research Applications



**Western Blot Analysis:** use at 0.5~2µg/ml

**Immunoprecipitation:** use 5µg antibody for 0.5mg total cell lysates.

C2C12 cell lysate was resolved by electrophoresis, transferred to PVDF membrane and reacted with 1µg/ml anti-acetyl-Lysine. Proteins were visualized using a goat anti-mouse secondary antibody conjugated to HRP and a ECL detection system. Multiple lysine-acetylated proteins were detected.